

CUT-MIX 120



TYPES

- ✓ COMPACT
- ✓ STANDARD

GENERAL DATA

- ✓ Sturdy construction, vibration-free machine of solid stainless steel AISI-304 execution.
- ✓ Designed and manufactured according to the European Guideline 89/392 CEE.
- ✓ Blade shaft head designed for up to 6 blades, including adjusting and dynamic balancing devices.
- ✓ Blades cover with variable cutting space by removable baffle plate.
- ✓ Water drain plug in bowl.
- ✓ Supplied with 6 blades and complete with all accessories.
- ✓ Bowl capacity: 120L.
- ✓ Net weight: 1.280 kg.

**TEC
MAQ**

STANDARD TYPE

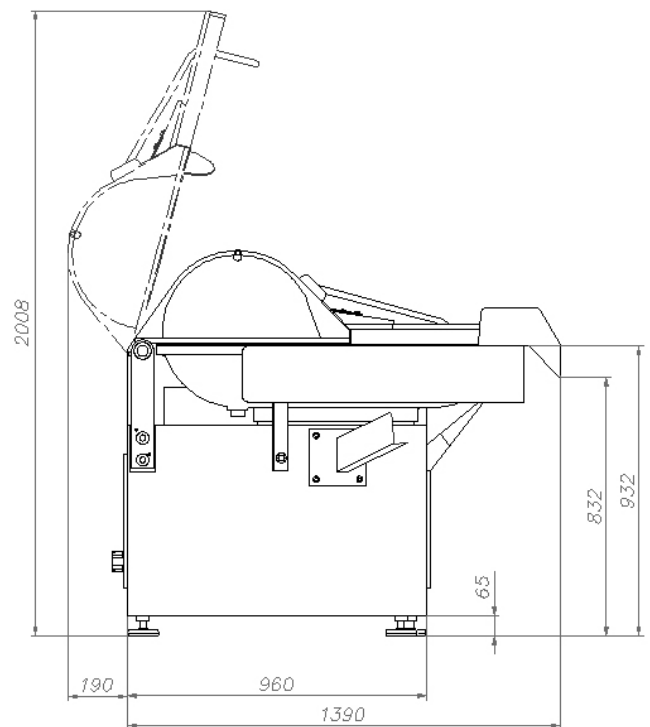
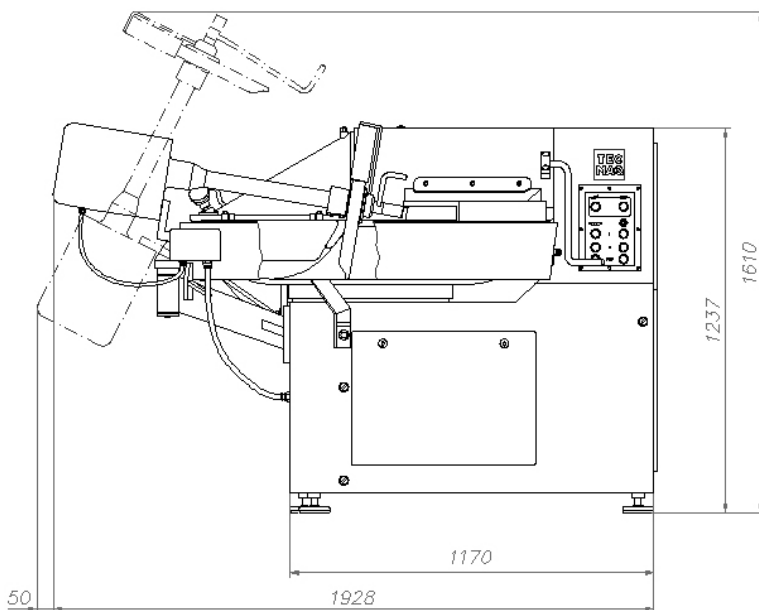
The push buttons control panel commands the 2 bowl speeds and the 2 blades speeds.

	POWER	SPEED
BLADES MOTOR	17 / 24 kW	1.500-3.000 min.-1 (r.p.m.)
BOWL MOTOR	0,7 / 1,1 kW	10 - 21 min.-1 (r.p.m.)
UNLOADER	0,5 kW	

COMPACT TYPE

- Industrial machine to process a wide range of meat products using fresh or frozen meats: From raw ground mix for fresh or dry sausages, to fine uniform emulsions for boiled or cooked products.
- Highly powered single speed motor commanded by an electronic frequency variation unit that reaches the necessary speed of 130 meters per second at the blades perimeter.
- To obtain a good crust emulsion it is necessary to equip the machine with high revolutions.
- Electric cabinet with electronic frequency variation unit.
- No need of an extra motor with a loose pulley for the knife
- Electric cabinet with electronic frequency variator.
- Membrane control panel and information displays.
- Count turns and electronic thermometer.
- 6 Cutting speeds (Up to the indicated maximum speed)
- 2 Inverse mixing speeds (120 and 150 min.-1 / r.p.m.)
- Program of a work cycle (based on a number of trough or temperature turns.)
- More powerful engine than the Standard version for obtaining emulsions.

	POWER	SPEED
BLADES MOTOR	29 kW	1.000-4.500min.-1(r.p.m.)
BOWL MOTOR	0,7/1,1 kW	10 - 21 min.-1 (r.p.m.)
UNLOADER	0,5 kW	



**TEC
MAQ**

MAQUINARIA SOLITEC, SL.

Pol. Ind. Can Clapés - c/ Torrent de'n Baiell

08181 SENTMENAT (BARCELONA)

Telephone: +34 937 15 18 44

www.tecmaq.es